

玖
霄
明
軒
GRAND ION
Majestic
@ Genting Highlands

TOWER
M3

CRÈME DE LA CRÈME

尊享极致生活

Towering over the vibrant skyline of Genting Highlands, a new standard of hospitality par excellence has emerged - poised high upon an urban hilltop with breath-taking views of the Titiwangsa Mountain range, this is where opulence is redefined. Welcome to the Grand Ion Majestic.

沿着延绵不绝的马来半岛蒂迪旺山脉前进，来到与云顶高原比邻的丛林之间。拨开云雾，尽收眼帘的，是一处极具奢华美景的优先度假胜地。欢迎来到远离世俗尘嚣的世外桃源 - 玖霄明轩。



WYNDHAM WORLDWIDE

温德姆环球公司

Led by the world's largest and most diverse hotel corporation, Wyndham Hotel Group, the Management prides itself on providing guests from around the world with an exceptional experience, a delightful stay and impeccable service. At Grand Ion Majestic, Wyndham's signature quality operations are complemented by stunning interiors to offer a truly indulgent experience for every guest, every time.

玖霄明轩由全球规模最大、业务多元化的酒店集团企业——温德姆酒店集团所经营。在玖霄明轩，标志性的细腻服务衬托着精致的室内设计，让每一位远道而至的宾客尽享温德姆式最卓越、贴心周到的服务，旅宿的体验亦升华至另一个高度。

CANADA 509 PROPERTIES
USA 5,726 PROPERTIES

加拿大 509 家物业
美国 5,726 家物业

EUROPE 380 PROPERTIES
MIDDLE EAST & AFRICA
53 PROPERTIES

欧洲 380家物业
中东与非洲 53家物业

CARIBBEAN, MEXICO, C&S AMERICA
198 PROPERTIES

加勒比区、墨西哥、美国中部与南部
198 家物业

ASIA & PACIFIC
1,556 PROPERTIES

亚太地区
1,556 家物业



REFINED LAYOUT, LUXURIOUS DECOR

精心布局奢华装饰

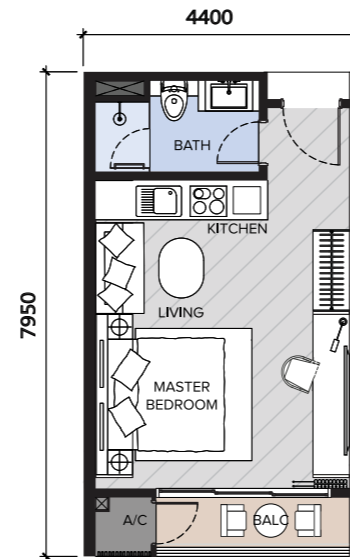
Feel pampered to the utmost in a beautifully designed suite. The welcoming ambiance, intelligent layout, quality furnishings and unparalleled views make it a charming escape from the bustle of the city.

玫瑰明轩温馨的氛围、精心的布局、优质的摆设及无与伦比的美景，给你娇纵之极的奢华享受，成为逃离城市喧嚣的迷人之地。

TYPE A1

380 sq.ft

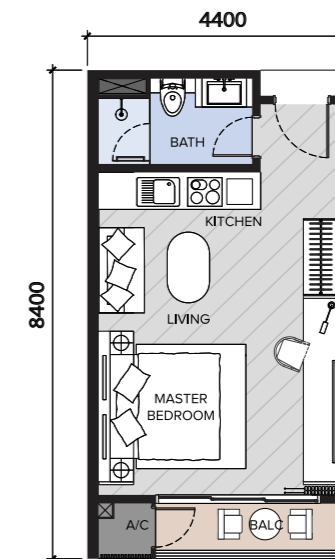
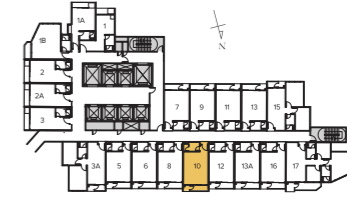
1 Bedroom
1 Bathroom



TYPE A2

400 sq.ft

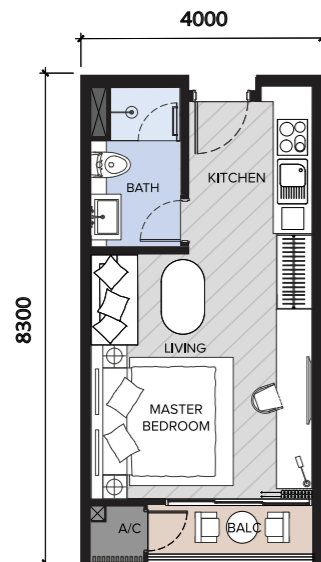
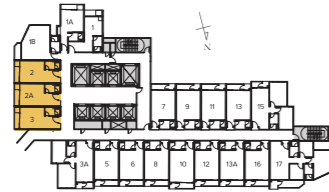
1 Bedroom
1 Bathroom



TYPE A3

360 sq.ft

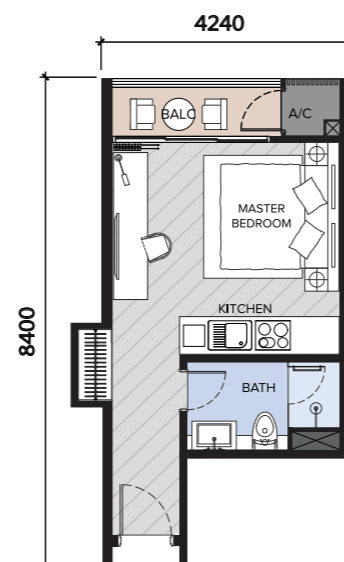
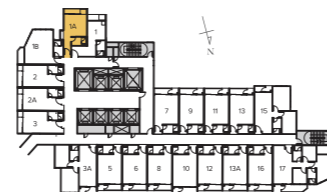
1 Bedroom
1 Bathroom



TYPE A4

340 sq.ft

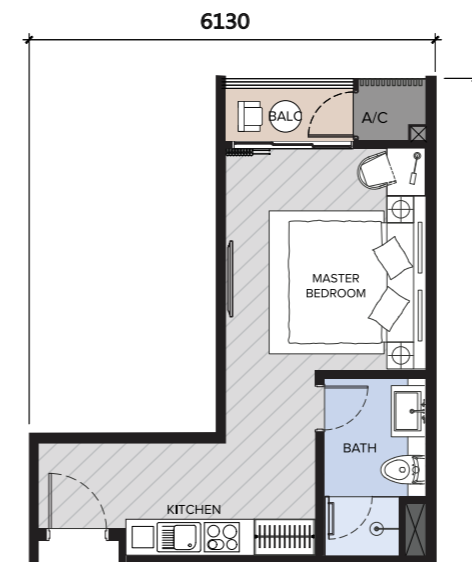
1 Bedroom
1 Bathroom



TYPE A5

320 sq.ft

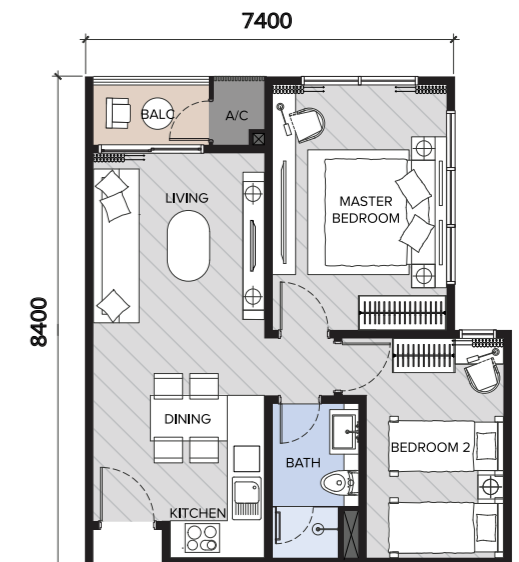
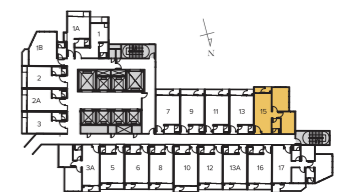
1 Bedroom
1 Bathroom



TYPE C1

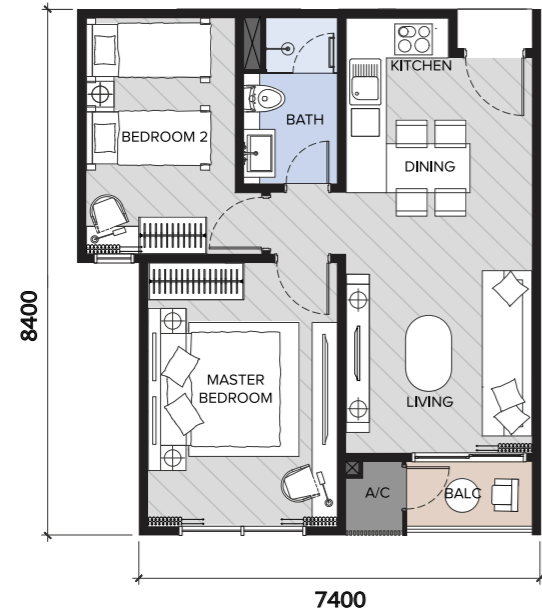
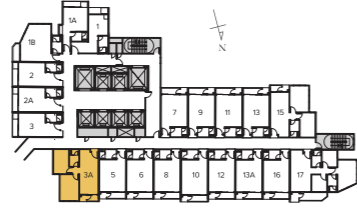
620 sq.ft

2 Bedrooms
1 Bathroom



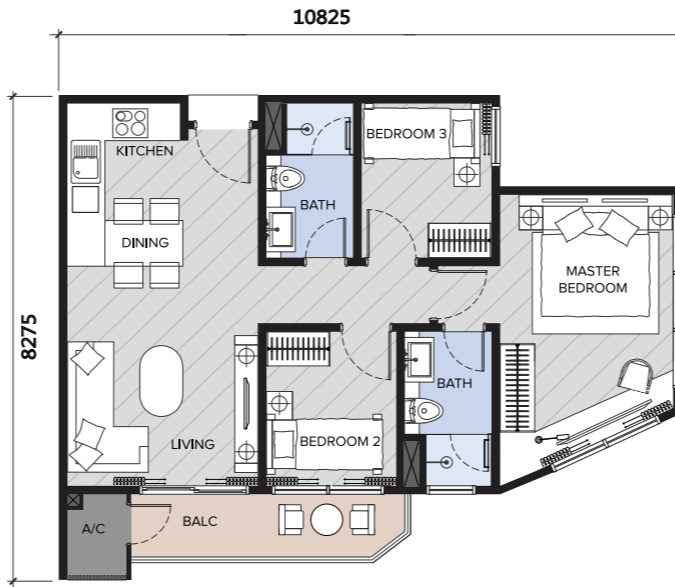
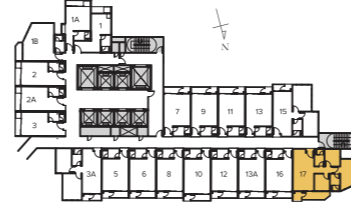
TYPE C3

620 sq.ft
2 Bedrooms
1 Bathroom



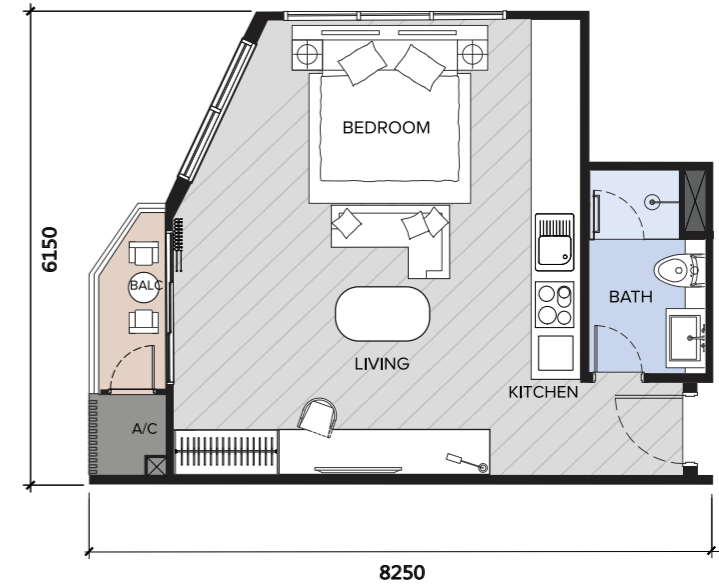
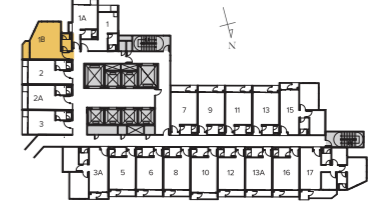
TYPE D1

800 sq.ft
3 Bedrooms
2 Bathrooms



TYPE D3

470 sq.ft
1 Bedroom
1 Bathroom



FACILITIES 设施

Floor	楼层	Facilities	设施
Ground Floor	底层	Grand Lobby	接待大堂
		Sky Lift Direct to Level 50	透视升降机直达第五十层
Level 1 - 10	第一至十层	Car Park	停车场
Level 11	第十一层	Management Office	管理处
Level 12	第十二层	All-day Dining	大餐厅
		Sky Lounge	空中闲廊
		Sky Bar	空中酒廊
Level 13	第十三层	Infinity Chill and Heated Pool	无边际热冷泳池
		Pool Bar	泳池酒吧
		Spa Room	水疗温泉
		Massage Room	按摩室
		Indoor Kids Pool	儿童戏水池
		Cigar Lounge	雪茄房
		Gym Room	健身室

Floor	楼层	Facilities	设施
Level 13	第十三层	Indoor Kids Playground	儿童游乐场
		Game Room	娱乐室
		Meeting Room	会议厅
		Theatre Room	电影室
		Rest Lounge	休息室
Level 14 - 49	第十四至四十九层	Typical Unit	典型单位
Level 29 - 30	第二十九至三十层	Pavilion Deck	景观亭
Level 38 - 39	第三十八至三十九层	Pavilion Deck	景观亭
Level 45	第四十五层	Sky Garden	空中花园
Level 49	第四十九层	Banquet Reception	宴会厅接待处
Level 50	第五十层	Sky Banquet Hall	空中宴会厅
		Sky Dining	空中桥餐厅
		Luxury Sky Pool	空中泳池
Roof Top	顶层	Sky Garden	空中花园

AMBIANCE OF PRESTIGE

格调高雅魅力非凡

Polished, urbane, classy and elegant, Grand Ion Majestic ushers you into a world of indulgence the moment you step through the foyer into the grand lobby.

玖霄明轩的接待大堂应用采光和精致的设计，引你进入一个典雅的氛围，体验文雅的高尚生活格调。



PROJECT HIGHLIGHTS

项目亮点



Malaysia's Only Development Boasting 4 Malaysia Book of Records
全马唯一打破四项马来西亚记录大全的项目

1st Record
Highest Altitude Glass Bottom Link Bridge

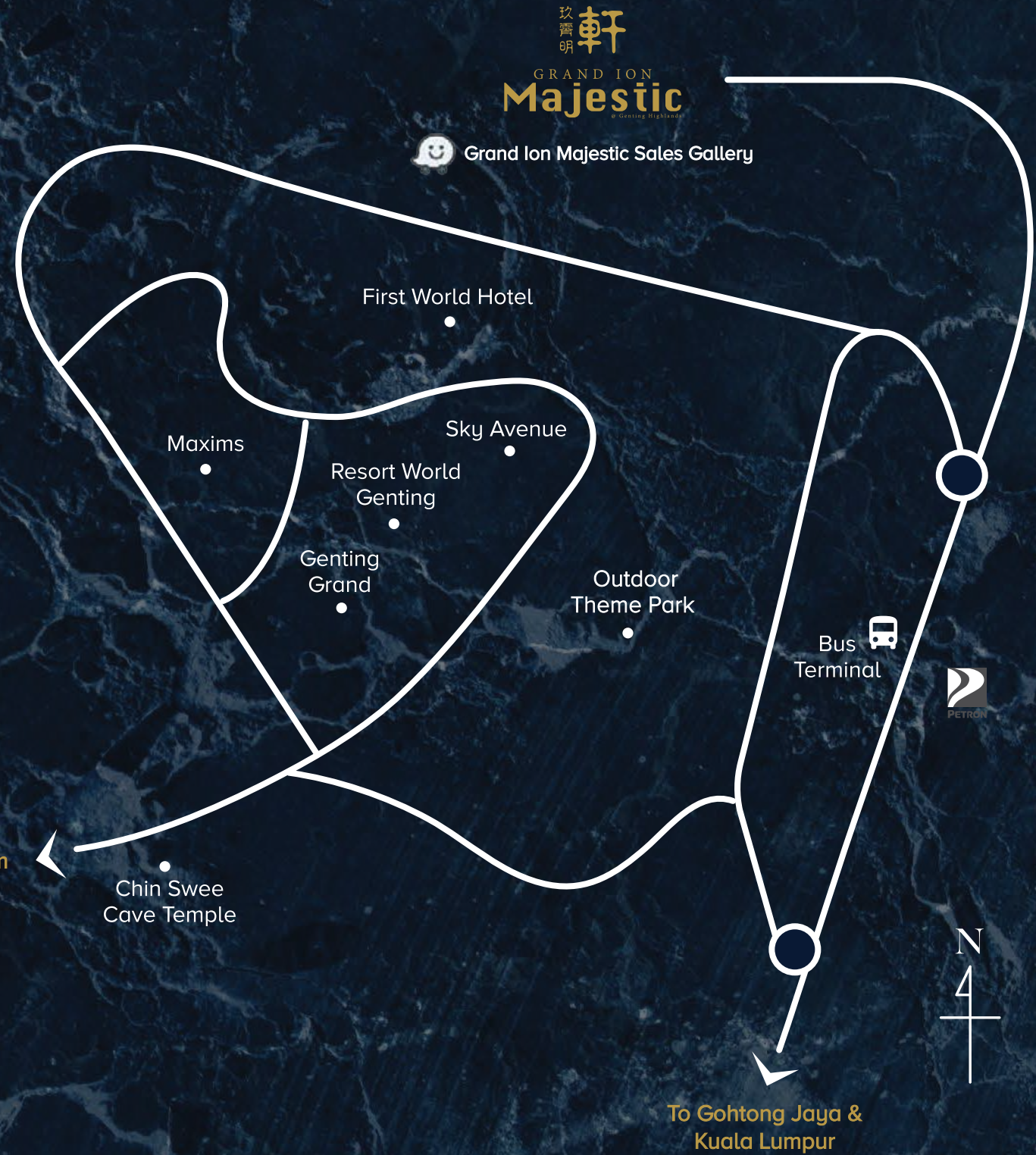
2nd Record
Highest Altitude Glass House

3rd Record
Highest Altitude Largest Banquet Hall

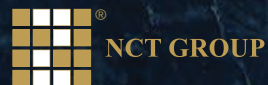
4th Record
Highest Altitude Clear Glass Sky Lift



Award-Winner:
Property Insight
Prestigious Developer Award 2018
Best International Destination Development



A Prestigious Project By :



Acknowledgement :



Developer :

Galeri Tropika Sdn Bhd (897084-K)
No.2, Jalan BP 4/9, Bandar Bukit Puchong, 47100 Puchong, Selangor Darul Ehsan, Malaysia.
T: 03-8064 3333 E: gim@nct.net.my

For more information :

+6019 939 7686
www.grandionmajestic.com

Sales Gallery :



Hotel Operators:



Developer : Galeri Tropika Sdn Bhd (897084-K), Menara NCT, No. 2, Jalan BP 4/9, Bandar Bukit Puchong, 47100 Puchong, Selangor. Tel : 03-8064 3333 Fax : 03-8064 3217
Developer's License No.: 12283/07-2027/0645(R) • Validity Period: 29/07/2022-28/07/2027 • Advertising & Sales Permit No.: 12283-6/07-2024/1072(R)-(S) • Validity Period: 21/07/2023-20/07/2024 • Approving Authority: Majlis Perbandaran Bentong(MPBTG) • Building Plan Approval Reference No.: Bil(65)DLM.M.PBTG/JKB/GH/4/20/2017 • Expected Completion Date: October 2024 • Land Tenure: Freehold • Land Encumbrances: No • Type of Property: Serviced Apartment • Total Units: Tower M3 - 704 units • Balance Unsold Units : 74 units • Selling Price: RM614,400 (min) to RM1,532,000 (max) • Disclaimer: The information contained herein is subject to change and cannot form part of an offer or contract. All renderings are artist's impression only. While every reasonable care has been taken in preparing this brochure, the developer cannot be held responsible for any inaccuracy. All the above items are subject to variations, modifications and substitutions as may be required by the Authorities or recommended by the Architect or Engineer. Please refer to the sales & purchase agreement of the actual unit for specifications & description approved by the authorities.